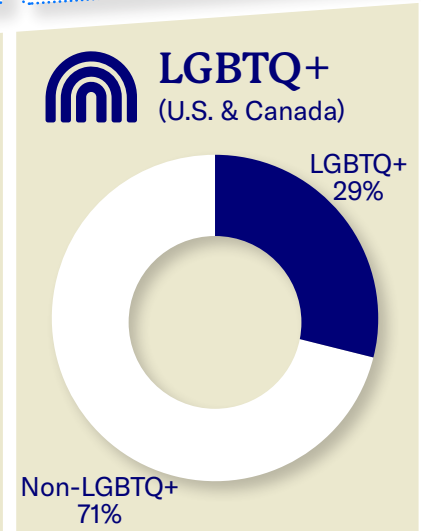
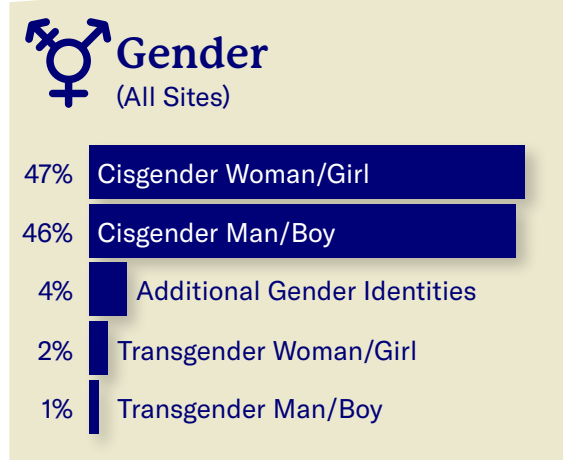
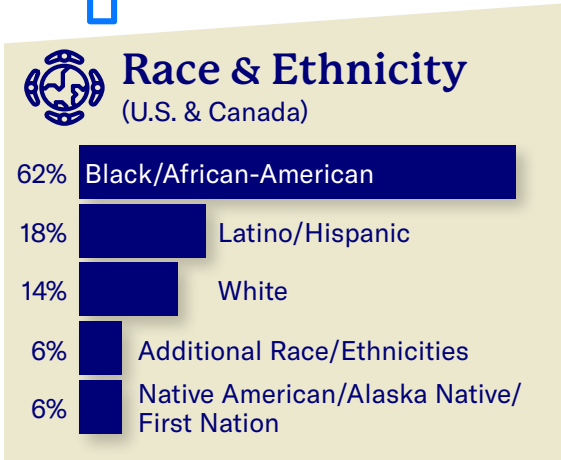
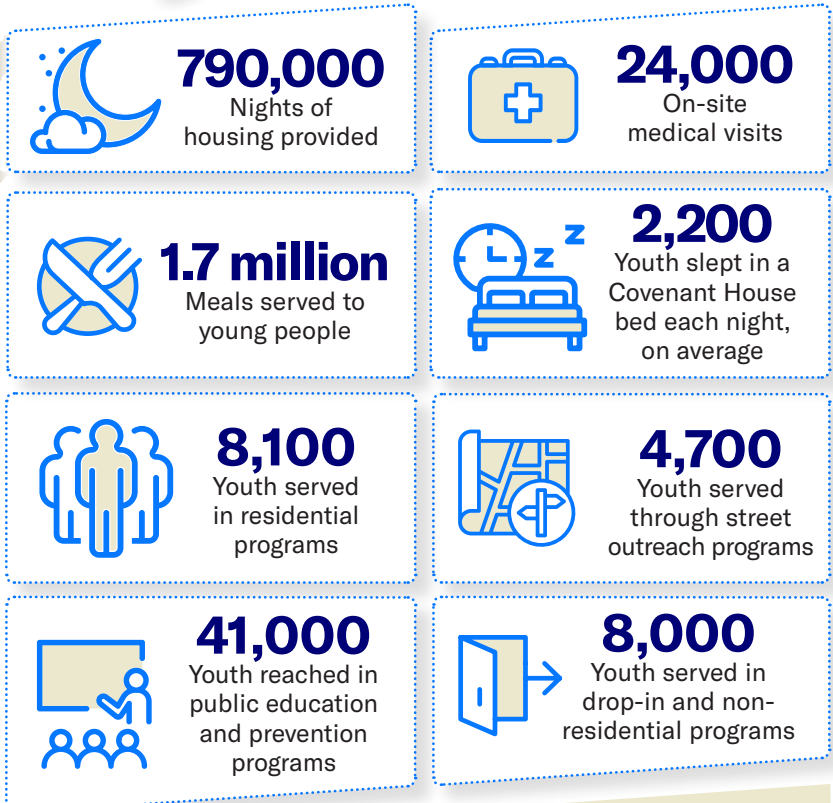


Providing Housing and Supportive Services to Youth Facing Homelessness

Our programs reached nearly **58,000** young people across **5** countries...



 **Average Age**
(Residential Programs)

14
years old
Latin America Housing

20
years old
U.S. & Canada Short-term Housing

20
years old
U.S. & Canada Transitional Housing

21
years old
U.S. & Canada Permanent Housing

Providing vital services that lead to *positive outcomes...*



3,800
Youth engaged in mental health services



3,200
Youth enrolled or remained in school



1,600
Youth engaged in on-site education programs



3,300
Youth engaged in on-site workforce development programs



2,500
Youth obtained or maintained employment



2,400
Youth moved to stable housing

Youth come into our care with diverse experiences and needs

U.S. & Canada



55%
Mental Health Challenges



53%
Have a High School Diploma/GED



31%
Survivors of Domestic Violence



30%
Foster Care History



25%
Employed at Intake

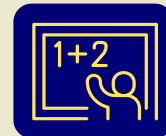


20%
Enrolled in School at Intake

Latin America



56%
Survivors of Childhood Abuse or Neglect



54%
Enrolled in School at Intake



37%
Witnessed Community Violence



27%
Survivors of Sexual Abuse



21%
Forced to Leave Their Home



18%
Substance Use History



Average Length of Stay (Residential Programs)

71 days

U.S. & Canada Short-term Housing

265 days

U.S. & Canada Transitional Housing

291 days

Latin America Housing



Supporting Young Families (Residential Programs)

Across all sites, we served...



462

babies/children



352

young parents



Covenant House[®]

Covenant House builds a bridge to hope for young people facing homelessness and survivors of human trafficking through unconditional love, absolute respect, and relentless support. Our doors are open 24/7 in cities across North and Central America, and our strengths-based programs are designed to empower young people to rise and overcome adversity, today and in the future.
www.covenanthouse.org